

SPONSORSHIP PROSPECTUS



Los Angeles, USA

21st World Brain Mapping Foundation
Gala

GFC AWARDS GALA

LOS ANGELES, USA

MARCH 15TH, 2024

GATHERING FOR THE CURE OF NEUROLOGICAL DISEASES



ABOUT

World Brain Mapping Foundation

The World Brain Mapping Foundation (WBMF) facilitates multidisciplinary brain and spinal cord research and seeks to expedite the integration and translation of cutting-edge technologies into neuroscience.

WBMF is focused on translating state-of-the-art technologies from the space and defense industries into neuroscience. The goal is to bring the most advanced medicine to wounded warriors and civilians.

The Foundation supports a variety of research projects, including:

Research and Development of pioneering neuro-technologies, imaging techniques, novel surgical technologies and therapeutics to visualize and treat brain and spinal cord diseases

WBMF also provides educational programs and resources to researchers; especially young investigators, clinicians, and the public. The Foundation aims to accelerate the pace of neuroscience discovery and improve people's lives affected by brain and spinal cord disorders.

Here are some of the ways you can support WBMF:

Donate to the Foundation's research fund WBMFDonate!

Volunteer your time to the Foundation's programs

Spread the word about WBMF's work

Collaborate with our faculty and research teams

Your support will help WBMF make a difference in the lives of people affected by brain and spinal cord disorders.

Table of Contents

About.....	Page 2
Annual Gala Awards.....	Page 3
Previous Honorees.....	Page 4
Catalogue of Initiatives.....	Page 5
Floorplan.....	Page 7
Sponsorship.....	Page 8
Forms.....	Page 9

ABOUT World Brain Mapping Foundation



ROBIN SIDHU MEMORIAL YOUNG SCIENTIST AWARD

Late Robin Sidhu (1988 – 2015), a young ebullient science driven and information technology (IT) savvy person, died of an accident at an early age. His mission to accomplish in-depth understanding of human mind and health remained incomplete due to his early departure but his legacy will remain through supporting young innovative minds in science through this award.

BEACON OF COURAGE AND DEDICATION AWARD

The Beacon Award is presented to individuals who have demonstrated extraordinary courage and dedication for increasing awareness about neurological diseases, and for patients and their families who have exceeded expectations in fighting a neurological disorder with unprecedented courage. The Beacon Award identifies remarkable individuals who set the highest standards for increasing awareness of, and fighting, neurological diseases.

PIONEER IN MEDICINE AWARD

The Pioneer in Medicine Award is presented to individuals who have significantly contributed to the scientific advancement in the fields of medicine and image guided therapy through a multidisciplinary approach. Their groundbreaking contributions have made development of state-of-the-art technology and scientific discovery a reality.

PIONEER IN HEALTHCARE POLICY AWARD

The Pioneer in Healthcare Policy Award is presented to lawmakers who have demonstrated visionary and crossdisciplinary approaches to introducing laws that have contributed to the advancement of science, technology, education, and medicine. They have paved the way to better integration of such advancements in other fields, like medicine and neuroscience. These lawmakers champion better healthcare for all.

PIONEER IN TECHNOLOGY AWARD

The Pioneer in Technology Award is presented to the trail blazing companies and their CEOs/presidents who have facilitated the development of pioneering technologies through interdisciplinary approaches that have impacted diagnostics, treatment, and health-care delivery in unprecedented ways.

GOLDEN AXON AWARD

The Golden Axon Award is presented to individuals outside of the medical community who inspire with good will and an enthusiastic interest in science, technology and medicine. Named for the neuron cell fiber that carries outgoing messages to other target cells, the founding principle of the Axon Award is to recognize a highly regarded individual in the public sector who helps raise awareness and funding of SBMT and its mission in the community via fundraising event(s) and activities.

HUMANITARIAN AWARD

The Humanitarian Award is given to physicians and scientists who have contributed significantly to survival and quality of life of patients across the Globe.

YOUNG INVESTIGATOR AWARD

The SBMT Young Investigator's Initiative is designed to recognize promising young scientists performing work in the brain sciences relevant to the Society for Brain Mapping and Therapeutics (SBMT). While this year's awardees will not be receiving any financial incentives, this recognition will be a stepping stone for future recognition within and beyond the SBMT's wide ranging collaborative partners.

STUDENT RESEARCH AWARD

The WBMF Student Service and Leadership Award is given to recognize excellence and commitment to dedicated fellows, interns, and students who have contributed to the advancement of medicine, specifically the neurosciences.

PREVIOUS Honorees

ROBIN SIDHU MEMORIAL YOUNG SCIENTIST AWARD



RUOGU FANG

BEACON OF COURAGE AND DEDICATION AWARD



HARRISON FORD



MONTEL WILLIAMS



WILLIAM CARPENTER



STEPHEN HAWKING



DUSTIN HOFFMAN



NICOLE HOCKLEY

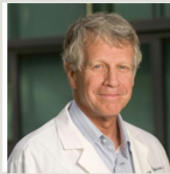
PIONEER IN MEDICINE AWARD



ERIC KANDEL



MICHAEL PHELPS



LAWRENCE STEINMAN

PIONEER IN HEALTHCARE POLICY AWARD



RO KHANNA



ROBERT N. KLEIN II



CHRIS MURPHY



MAXINE WATERS



ARNOLD SCHWARZENEGGER



NANCY PELOSI

PIONEER IN TECHNOLOGY AWARD



JIM PEARSON



AMIN KASSAM



JEAN GASPARD

GOLDEN AXON AWARD



WES ASHFORD



KEERTHY SUNDER



NEVZAT TARHAN



ROBERT HARIRI



HARRY KLOOR



REINHARD SCHULTE

HUMANITARIAN AWARD



SANJAY GUPTA



ANTHONY FAUCI



DEEPAK CHOPRA

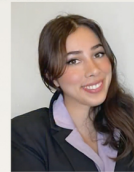
STUDENT SERVICE AND LEADERSHIP AWARD



JOTHSNA BODHANAPATI



LILA KENDALL



MELODY SADRI



JAMES OKEREKE



NATALIA FEDORCHENKO



KATERYNA POTAPOVA



THE ANNUAL WORLD CONGRESS OF SBMT

is the culmination of the yearly work of 20 Neuroscience focused Subcommittees, chaired by industry and science trailblazers that have researched, gathered and tailored avant-garde modules and sessions by the best in their fields, to be presented as panels, lectures, workshops and keynotes.

THE BIOSKILLS LAB

The Lab is our biggest Brain and Spine Workshop, dedicated to teaching new techniques and technologies. Takes places in a detached mobile surgery laboratory equipped with the latest devices at the Annual World Congress of SBMT.

GFC (GATHERING FOR THE CURE) AWARDS GALA

A celebratory fundraiser to award those involved in neuro-related policy, healthcare, technology, humanitarian efforts, research, students and leadership. This prestigious Gala has been attended by Hollywood Stars, Nobel Prize Laureates, High Caliber Politicians, Brilliant Minds in Science, Advocates for Better Policies and Rising Young Science Influencers.

NEUROSCIENCE20

The Only Working Group following the G20 Summit around the globe, on Brain, Spine, Mental Health and Policy Advocacy. Our resolutions have been presented to leaders of the G20, Sherpas and influential people to push for better neuro-healthcare policy worldwide.

SBMT BRAIN INITIATIVES

Are our home, away from home, working groups. Our multi-centric, International, local groups work year-round to research, diagnose, and combat neuro-related diseases from the laboratory to the hospital.

BRAIN MAPPING DAY

Our own local group advocating for better future neurohealthcare at the California State Assembly and in Washington D.C.

GLOBAL PHYSICIANS AND SCIENTISTS

The Humanitarian Mission that has put PPE in the hand and faces of those who needed it in the COVID 19 pandemic, and the one that gathered physicians and scientists to help in the war in the Ukraine.

BRAIN TECHNOLOGY AND INNOVATION PARK

BTIP Brain Technology and Innovation Park Imagine a center that gathers the best minds related to neurosciences, with the latest devices, latest research, trailblazing innovation, that could spin-off ideas into products, create startup, mid and high experience jobs and advocate for them inside and out of classrooms, hospital and policy circles.

NATIONAL CENTER FOR NANOBIO ELECTRONICS

NCNBE National Center for NanoBioElectronics What if we could establish collaborating research laboratories and networks throughout the state of California and beyond to rapidly develop solutions for neurological disorders? That is the mission we have

SBMT KIDS CORNER

We want to captivate young minds interested in neurosciences, and provide K-12 students with a fun and engaging way to learn.

FELLOWS AND INTERNS PROGRAM

Participate at a different level in the discussions that shape science and policy. We believe in inclusion in the room where it happens. Be at the table where the hot topics are discussed, from internship positions all the way to research scientists.

WORLD BRAIN MAPPING FOUNDATION

CATALOGUE OF INITIATIVES

SBMT SCIENTIFIC COMMITTEE

20 Neuroscience focused Subcommittees, chaired by industry and science trailblazers that have research, gather and work together to train and publish neuro-science.

THE WOMEN IN NEUROSCIENCE GROUP

We are committed with equality in sciences, and thus we highlight and elevate our distinguished female scientists, while promoting female leaders that inspire the future generations.

MULTIPLE SCLEROSIS AND NEURODEGENERATIVE DISEASES INITIATIVE

Raising awareness, focusing on research of innovative diagnostic and therapeutic modalities for MS and ND Diseases, while fast-tracking the adoption of novel techniques.

SBMT VOLUNTEERS

We are proud of our youngest members, therefore we listen to them as we do with our seasoned veterans.



Global Physicians and Scientists



BioSkills Lab



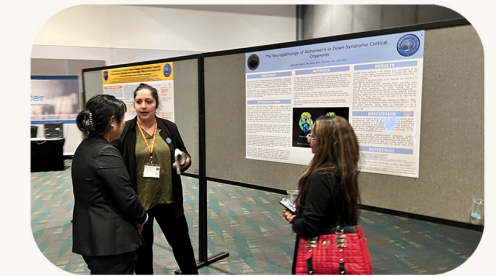
ME+ Brain



SBMT Kids Corner



Neuroscience20



Fellows and Interns



GFC Awards Gala



Annual World Congress



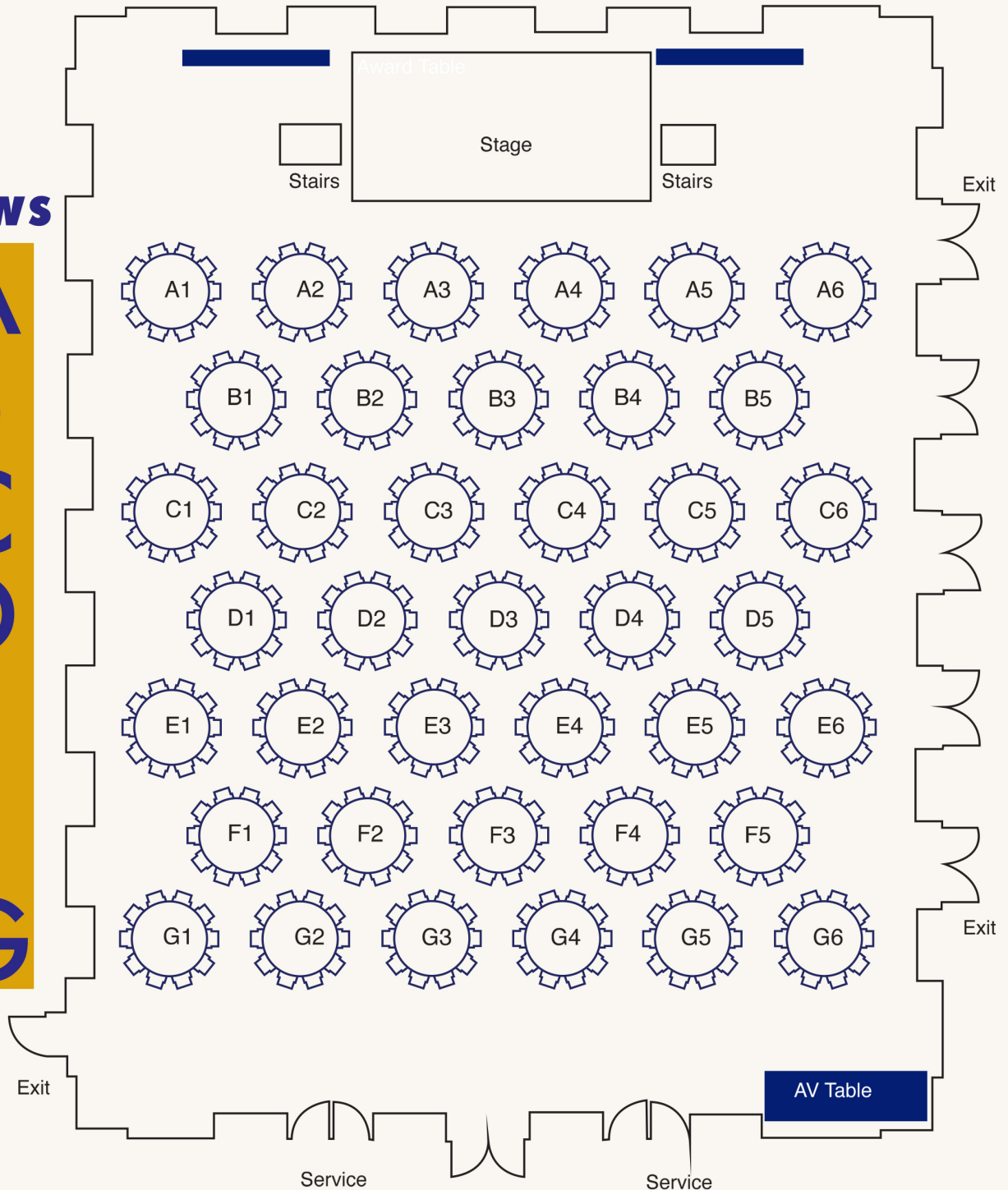
Brain Mapping Day

World Brain Mapping Foundation GFC Awards Gala Floor Plan



Rows

A
B
C
D
E
F
G



Changes in plan distribution might happen without prior notice, the event organizers will honor the preferential distribution.

GFC AWARDS GALA 2024

BENEFACTORS LEVELS

CHAIRMAN'S PLATINUM BENEFACTOR \$70,000+

- 30 Gala Tickets (3 tables) Seats in Row A and be seated with VIPs (optional).
- 30 Invitations to the Pre-Gala cocktail reception
- Red carpet Interview with Brain Mapping TV
- Inclusion in all Gala press releases and Name or logo on the Gala Step-and-repeat
- Donor Acknowledgment on the WBMF website.

CHAIRMAN'S GOLDEN BENEFACTOR \$50,000+

- 20 Gala Tickets (2 tables) Seats in Row B/C and be seated with VIPs (optional).
- 20 Invitations to the Pre-Gala cocktail reception
- Red carpet Interview with Brain Mapping TV
- Inclusion in all Gala press releases and Name or logo on the Gala Step-and-repeat
- Donor Acknowledgment on the WBMF website.

CHAIRMAN'S SILVER BENEFACTOR \$30,000+

- 10 Gala Tickets (1 tables) Seats in Row B/C and be seated with VIPs (optional).
- 10 Invitations to the Pre-Gala cocktail reception
- Red carpet Interview with Brain Mapping TV
- Inclusion in all Gala press releases and Name or logo on the Gala Step-and-repeat
- Donor Acknowledgment on the WBMF website.

CHAIRMAN'S BRONZE BENEFACTOR \$20,000

- 10 Gala Tickets at the gala on row D (one preferential table C6)
- 10 Invitations to the Pre-Gala cocktail reception
- Red carpet Interview with Brain Mapping TV
- TV Inclusion in all Gala press releases and
- Inclusion in all Gala press releases, Name and logo on the Gala Step-n-repeat

DIAMOND BENEFACTOR \$1,500

- 1 Gala Tickets at the gala on row E

SAPPHIRE BENEFACTOR \$1,000

- 1 Gala Tickets at the gala on row F

TOPAZ BENEFACTOR \$500

- 1 Gala Tickets at the gala on row G (AWC SBMT Presenter price, w/code)

SPONSORSHIP FORM

Information

Information

Title: _____ Organization: _____
Full Name: _____
Job Title: _____
Address: _____
Phone: _____ E-mail: _____
Amount

Sponsorship Level

- Partners _____
 Neuropolicy Champions _____

Payment Details

BANK TRANSFER PAYMENTS:

I will arrange a bank transfer on receipt of an invoice.
(Please manually add supporter dues): _____

CREDIT CARD PAYMENTS:

Credit Card Number: _____
Name on Card: _____
Card Type: _____ Expiration Date: _____ Security Code: _____
Amount to be charged: _____ Billing Address: _____

CHECK PAYMENTS:

All checks should be sent to:
Annual World Congress of SBMT
860 Via de la Paz, Pacific Palisades, CA 90272, USA

BOOKING TERMS & CONDITIONS:

Acceptance of applications for exhibits or support is at the discretion of the organizers. **ALL SALES ARE FINAL.**

Payment must be made within 30 days of invoice. Please note that full contact details of delegates will not be available to an exhibitor due to data protection restrictions.

I have read and agree to abide by the booking terms and conditions, and I understand that this form confirms my booking. I accept that sales are final and the full fee will be payable.

SIGN & DATE FORM:

(Please note that unsigned forms cannot be accepted.)

SIGNATURE:	DATE:
------------	-------



Scan & E-mail Form to:
Dr. Babak Kateb
Babak.Kateb@WorldBrainMapping.org

Mail Checks to: Brain Mapping Foundation
860 Via de la Paz, Suite E-1, Pacific Palisades, CA 90272, USA
Office number: +1 (310) 500-6196
Fax number: +1 (323) 654-3511